

# PLANT!T® *gemini* Product Specification

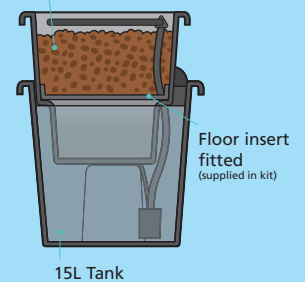
## PLANT!T® *gemini*™ RECIRCULATING HYDROPONIC SYSTEM



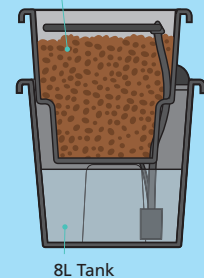
- Integral nutrient solution level indicator
- One plant system
- Maintenance cover – no need to remove the planter to check pH/EC readings
- Laser-cut flow-ring means reduced chance of blockages
- Insert for media options
- Cable management points ensure all wires and pipes fit neatly, so no blocked pipes or airlines and no tangled wires. All fit correctly, so no problems with light or algae
- Stable footprint
- Great yields - better than hand watering, as more nutrients are provided to the roots
- Flexible - plants can be moved around as each gemini is a standalone system
- Better results - free-draining, highly oxygenated root zone with no nutrient or water build-up

### Can be used in 2 ways

10L growing media

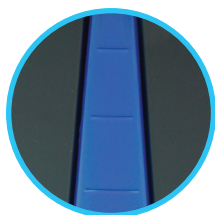


18L growing media



1 PLANT KIT

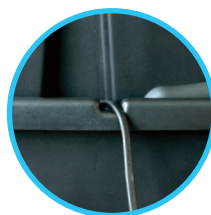
Profile level indicator



Insert for media options



Cable management points



Laser-cut flow-ring



Media supplied



### Product description

The PLANT!T® gemini is a standalone 1 plant recirculating hydroponic system. Plants are supported and grown in a media such as PLANT!T® Clay Pebbles and they are suspended above the tank filled with nutrient solution.

The nutrient solution is pumped through the clay pebbles, via the flow-ring, direct to the roots of the plant. This draws vital oxygen into the nutrient solution as it works its way to the plant roots and ensures great growing results. The PLANT!T® gemini is supplied with a floor insert giving you the option to decide on the amount of media you use.

### Technical specification

Approx. W 347mm / D 357mm / H 447mm

Visit [www.plantit-growit.com](http://www.plantit-growit.com)